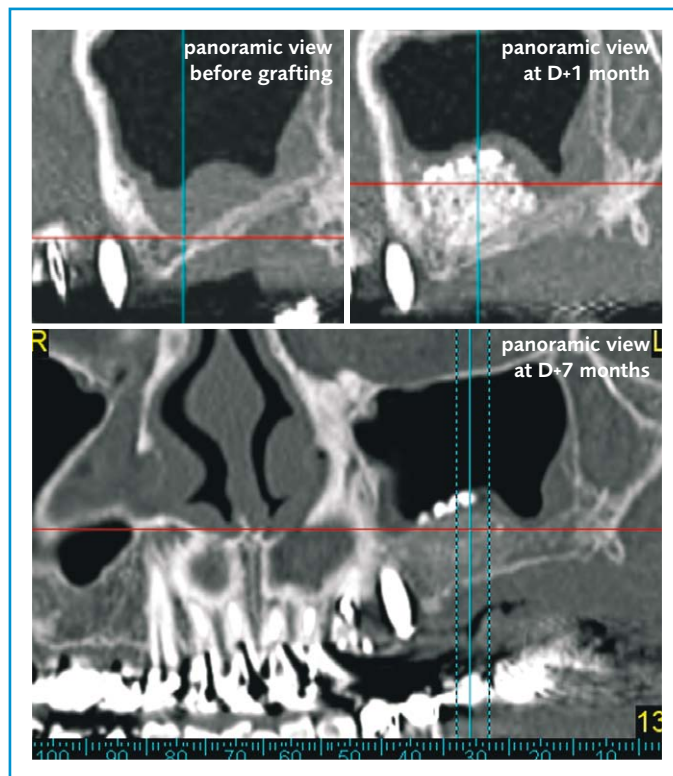


# kasios<sup>®</sup> TCP

Dental HP

High Porosity Synthetic Bone Substitute



Sinus lift using KASIOS TCP Dental HP



KASIOS TCP Dental HP is a synthetic bone substitute with exceptionally high porosity (90%) and total interconnection.

Thanks to this porosity and its chemical composition (beta-TCP), when implanted in bone, KASIOS TCP Dental HP is replaced in 6 or 7 months by neoformed bone tissue.

**Indications**

- Sinus graft
- Bone loss correction
- Filling alveoli
- Periodontology

**Biomaterial**

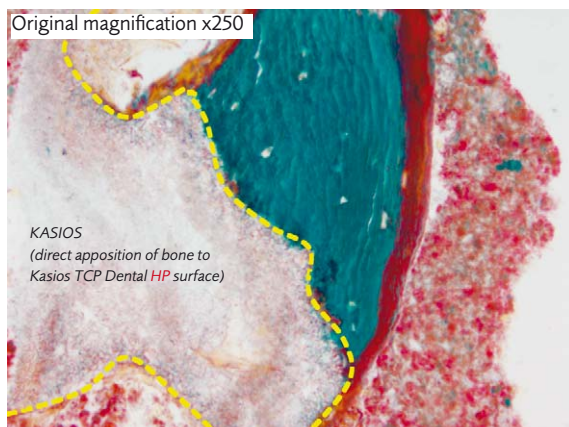
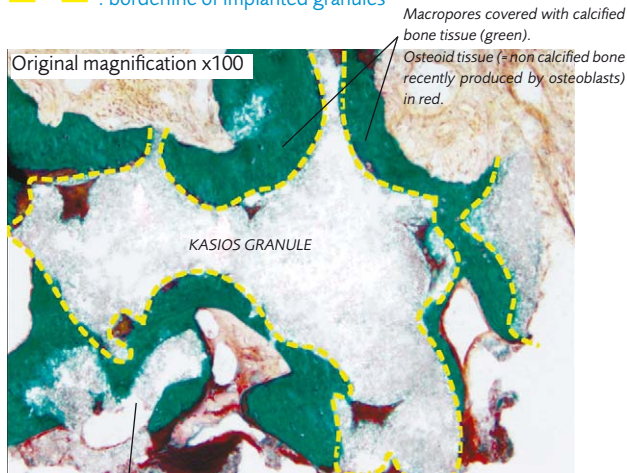
KASIOS TCP Dental HP is entirely composed of beta-TCP. Beta-TCP, or beta-tricalcium phosphate, belongs to the same chemical family as the mineral substance of bone, so that osseointegration is complete when it is placed in a bone site.

**Histology**

Bone cores were sampled at D+3 months from the sinuses previously filled with KASIOS TCP Dental HP. In all cases, the same degree of bone remodeling was seen (see imagery below). Please note on the second picture the perfect apposition of bone to biomaterial, evidence of its osseointegration.

Color: Goldner's trichrome

— — : borderline of implanted granules



INSERM U922-Angers (Pr D. Chappard)

**Granulometric data**



Grain size :  
**150-500 µm**  
(0.15 to 0.5 mm)

*Designed for periodontal indications.*



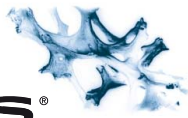
Grain size :  
**500-1000 µm**  
(0.5 to 1 mm)

*Recommended for alveolar filling and more generally, medium-sized bone defect filling.*



Grain size :  
**1000-2000 µm**  
(1 to 2 mm)

*Recommended for sinus lift.*

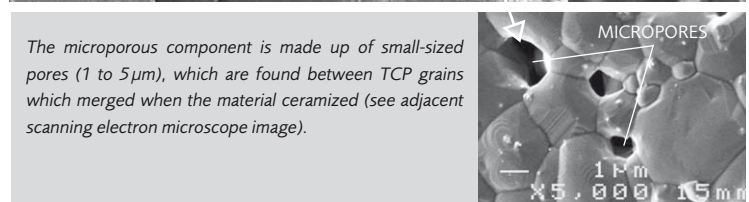
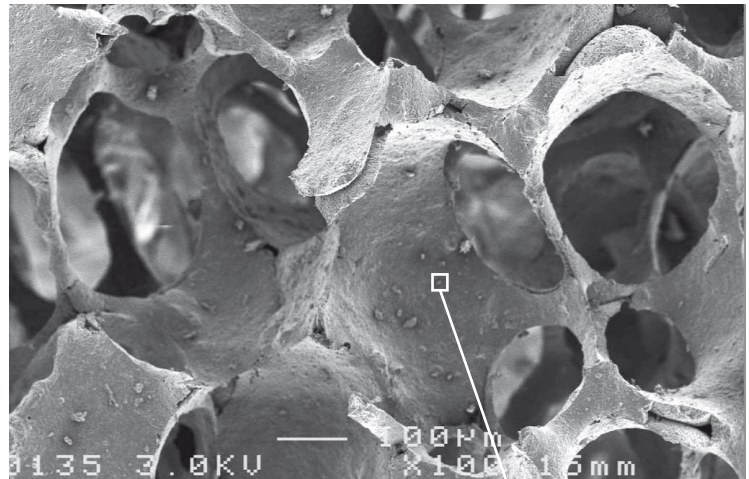


**Porosity**

Global KASIOSTCPDentalHP porosity is close to 90%. Both macroporosity and microporosity are present.

The macroporous component is made up of large-sized pores (0.2 to 0.5 mm), all interconnected. (See scanning electron microscope image). This interconnected macroporosity allows bone tissue to penetrate into the heart of the biomaterial (osseointegration by osseoconduction).

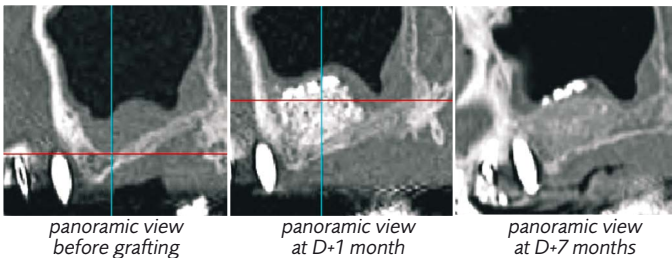
The next step is the start of the KASIOSTCPDentalHP bone remodeling process, during which bone cells will be fragmenting and digesting the biomaterial while they produce new bone replacement tissue.



The microporous component is made up of small-sized pores (1 to 5µm), which are found between TCP grains which merged when the material ceramized (see adjacent scanning electron microscope image).

INSERM U922-Angers (Pr D. Chappard)

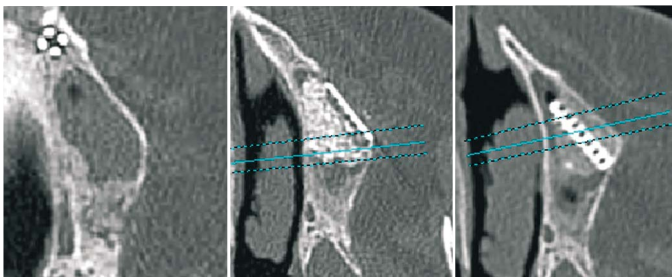
**CLINICAL CASE: Sinus lift with KASIOS TCP Dental HP grafting and dental implant reconstruction, at 7 months**



panoramic view before grafting

panoramic view at D+1 month

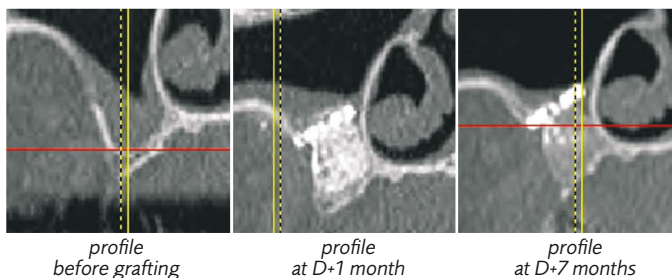
panoramic view at D+7 months



horizontal view before grafting

horizontal view at D+1 month

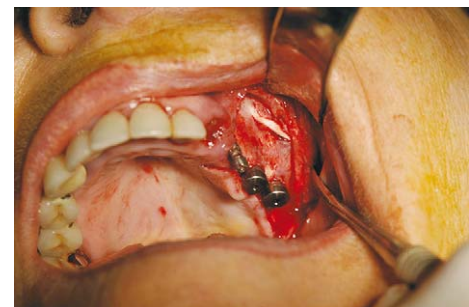
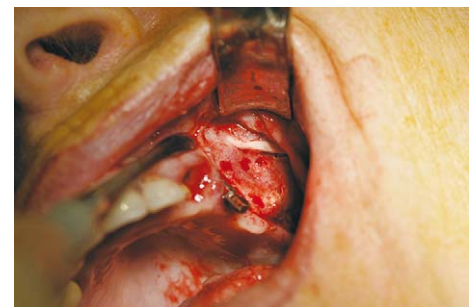
horizontal view at D+7 months



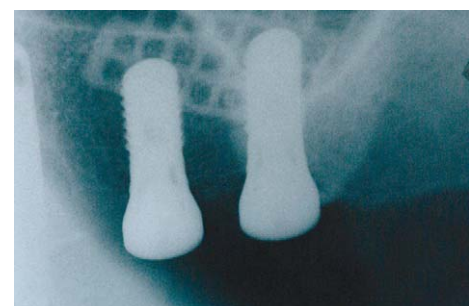
profile before grafting

profile at D+1 month

profile at D+7 months

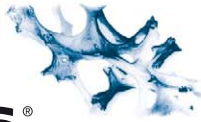


placing implants



x-ray after implant placement

(Courtesy of Bernard Guillaume, M.D. and Norbert Bellaïche, M.D.)



## Packaging

KASIOS TCP Dental HP is packaged in boxes of 5 double cups, (individually sterile).

Designation	Ref.	Packaging
KASIOS TCP Dental HP 150-500 µm	K4070050HP	Box of 5 cups x 0.5cc - sterile
KASIOS TCP Dental HP 500-1000 µm	K4070550HP	Box of 5 cups x 0.5cc - sterile
KASIOS TCP Dental HP 1000-2000 µm	K4071050HP	Box of 5 cups x 0.5cc - sterile
KASIOS TCP Dental HP 150-500 µm	K4070150HP	Box of 5 cups x 1cc - sterile
KASIOS TCP Dental HP 500-1000 µm	K4070600HP	Box of 5 cups x 1cc - sterile
KASIOS TCP Dental HP 1000-2000 µm	K4071100HP	Box of 5 cups x 1cc - sterile
KASIOS TCP Dental HP 1000-2000 µm	K4071200HP	Box of 5 cups x 2cc - sterile

DISTRIBUTED BY