



Palmar & Dorsal
RADIUS
Plating System



PRP



DRP

MONDE | *hand*

The Palmar & Dorsal RADIUS Plating System is primarily used in traumatology, but also in elective reconstructive surgery.

With our PRP & DRP, the entire spectrum of distal radius fractures can be surgically treated.

- All plates are anatomically preformed. In terms of handling, the systems are easy to implement and just as easy to remove.
- All screws can be used universally in both the PRP and DRP. The majority of the required instruments are compatible with both systems.
- The curved shape of the shaft over the entire length of the plate ensures optimal cortical anchorage.
- Our DRP system is minimally invasive.
- In addition, the DRP system also provides intramedullary stabilization due to the special design of the plates.





MONDE|*hand*

RADIUS

Table of Contents

• Screws	Page 3
• Plates PRP	Page 4
• Plates DRP	Page 5
• Instruments	Page 6 - 8
• Container info	Page 9

PRP Palmar Radius Plating System

DRP Dorsal Radius Plating System



Screws (Packaging: 1/ea.)

PRP + DRP



MCD Screw, locking



Art. No.	Diameter x Length
26-M0A-2510	2.5 x 10 mm
26-M0A-2512	2.5 x 12 mm
26-M0A-2514	2.5 x 14 mm
26-M0A-2516	2.5 x 16 mm
26-M0A-2518	2.5 x 18 mm
26-M0A-2520	2.5 x 20 mm
26-M0A-2522	2.5 x 22 mm
26-M0A-2524	2.5 x 24 mm
26-M0A-2526	2.5 x 26 mm
26-M0A-2528	2.5 x 28 mm
26-M0A-2530	2.5 x 30 mm



MCD Screw, non locking



Art. No.	Diameter x Length
26-M0B-2510	2.5 x 10 mm
26-M0B-2512	2.5 x 12 mm
26-M0B-2514	2.5 x 14 mm
26-M0B-2516	2.5 x 16 mm
26-M0B-2518	2.5 x 18 mm
26-M0B-2520	2.5 x 20 mm
26-M0B-2522	2.5 x 22 mm
26-M0B-2524	2.5 x 24 mm
26-M0B-2526	2.5 x 26 mm
26-M0B-2528	2.5 x 28 mm
26-M0B-2530	2.5 x 30 mm

DRP



26-M0M-3008 MCD Fixation screw for Dorsal Radius Plate DRP



For the dorsal intramedullary plating area



Plates (Packaging: 1/ea.) Thickness: 1.6 mm

PRP



26-MVI-0001L Palmar Radius Plate PRP short left



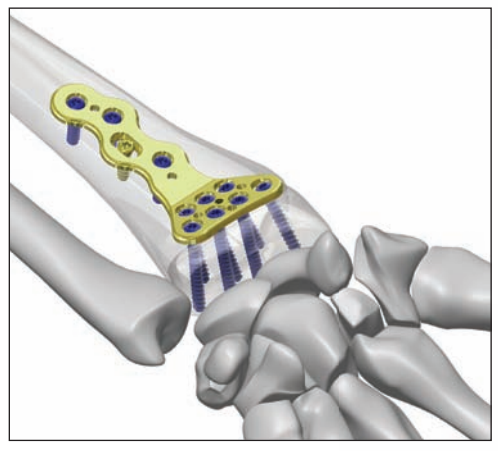
26-MVI-0001R Palmar Radius Plate PRP short right



26-MVI-0002L Palmar Radius Plate PRP long left



26-MVI-0002R Palmar Radius Plate PRP long right





Plates (Packaging: 1/ea.)

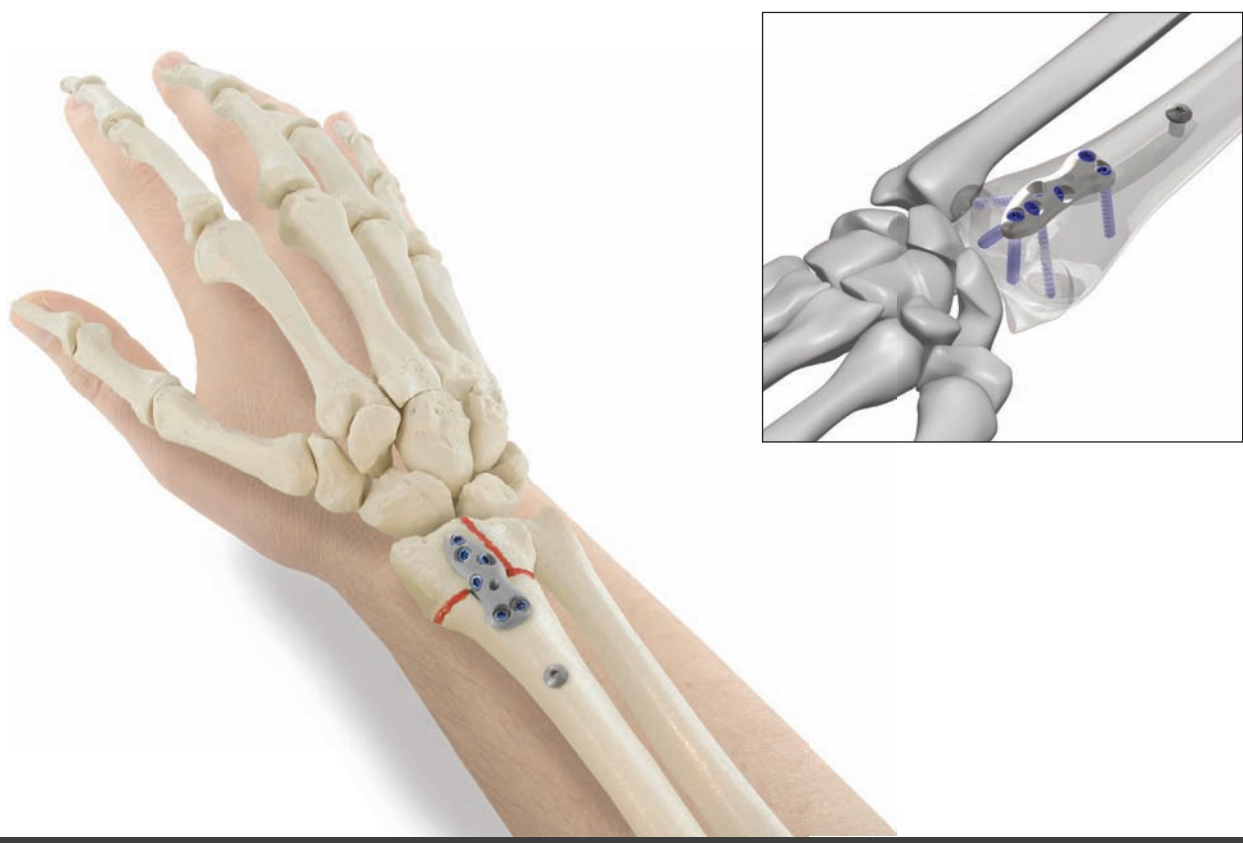
DRP



26-MD3-3006L Dorsal Radius Plate DRP left



26-MD3-3006R Dorsal Radius Plate DRP right





Instruments

PRP + DRP



10-61000 Screwdriver handle rotatable, 9.5 cm



84-SK0-6200 MCD blade, self-retaining, for handle 10-61000



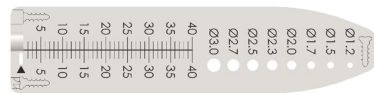
84-SS0-1300 MCD Screwdriver fixed



85-VA3-2100 Drill 2.1 x 105 mm, WL 40 mm, Stryker



26-SG2-9000 Drill guide with measuring scale



84-SP0-0001 Screws measuring plate



34-10155 Depth measuring gauge, 15 cm



10-60030 Plate holding forceps curved, 18 cm



Instruments



26-30230 Handle for drill guide



26-SG1-0001L Drilling gauge, left

26-SG1-0001R Drilling gauge, right



26-SG2-0001 Drill guide for drilling gauges



27-00918-150 K-Wire 1.8 x 150 mm (10/ ea.)



26-30114 Bending Instrument for Plates (Recommendation: 2 pieces)



Instruments



26-VD3-3300 Opening Drill 3.3 x 63.7 mm, WL 10 mm Stryker, for DRP fixation screw



26-SG2-1002 Reduction sleeve large for target instrument DRP



26-SG2-1001 Reduction sleeve small for target instr. DRP



26-SG1-1000L Target instrument DRP left incl. fixation screw



26-SG1-1000R Target instrument DRP right incl. fixation screw



23-90001 Bone Awl, curved

(optional)

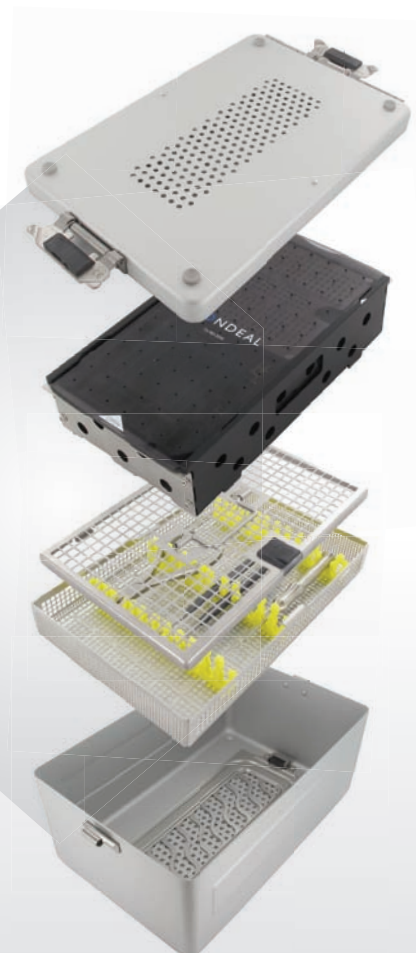


26-00918-150 K-Wire 1.8 x 150 mm (10/ ea.) with marking for drill guide with measuring scale 26-SG2-9000



RADIUS

Modular
ContainerSystem



MONDEAL | *hand*

The RADIUS modular design principle enables the user to combine screws, plates and instruments individually. This variety of configuration options is also reflected in the modular container system. The container components are arranged and combined depending on the user's preferences and the selection of the individual elements.



MONDEAL | *hand*

High Quality
Implants
Made by MONDEAL

We reserve the right to make catalog and design changes arising from further developments and modifications. Pictures, product descriptions and texts are the property of MONDEAL Medical Systems GmbH. Further use and reproduction by Third Parties requires written consent from MONDEAL Medical Systems GmbH. All rights reserved! Note: Responsibility for the selection of the patient, for adequate training as well as the decision as to the choice and use of the implants, a post-operative removal or retention of implants is the sole decision of the surgeon. All brands and logos referred to in this brochure, registered by Third Parties, are subject without restriction to the legal provisions currently in force and to the rights of ownership of the respective registered owner.
© 2013 - MONDEAL Medical Systems GmbH

